

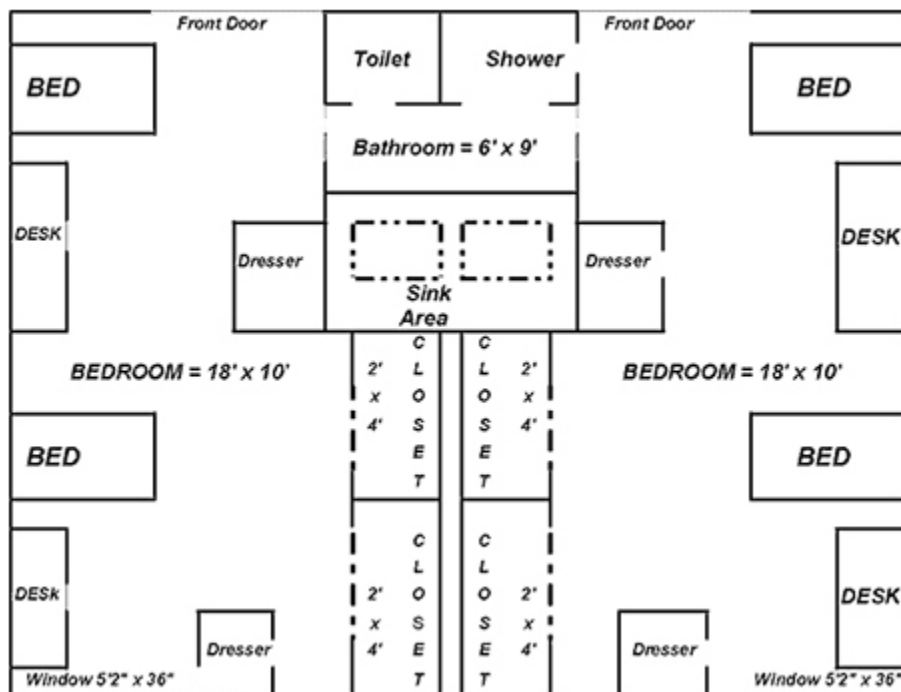
Housing Options at Dallas Baptist University

Dallas Baptist University is offering suites in two different Residence Halls. There is no elevator in Lange Hall, only stairs. Spence Hall does include elevator access to rooms. You will need to provide your own laundry supplies (detergent/fabric softener/iron/ironing board) and linens (extra-long twin sheets/blankets/pillows/towels). Trash bags and toilet paper are provided. If more than 4-5 people are staying in your suite, you will need to provide any air mattresses, other padding, or cots desired for those who will not be sleeping on beds. Suites have a maximum occupancy of 7-8 people as detailed below. Dallas Baptist University staff will make all suite assignments. Contact Stoa's administrator with your questions at nitoc@stoausa.org.

Lange Residence Hall Suite

2 bedrooms + 1 bathroom for \$200/week

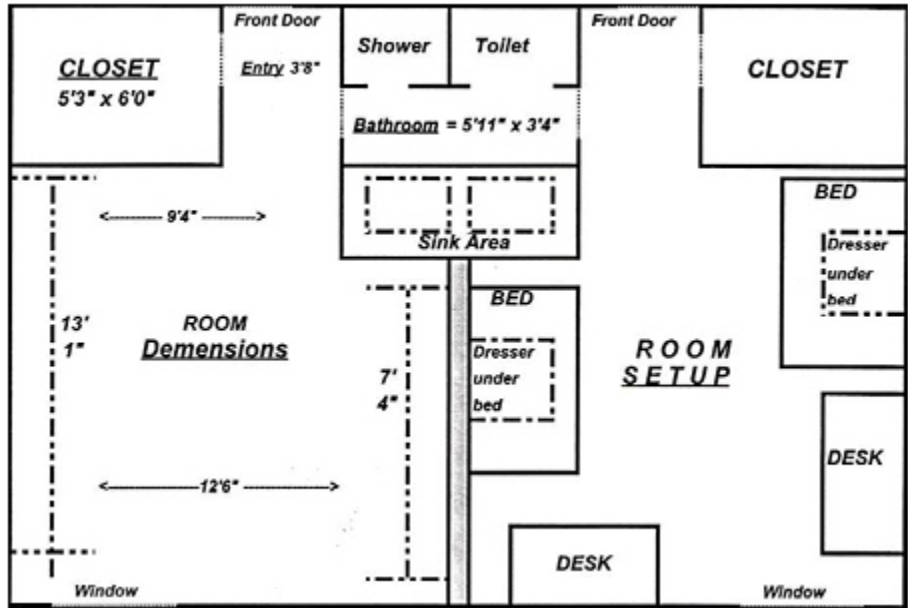
Includes 2 private bedrooms, shared bathroom, five (5) extra-long twin beds per suite, two (2) mini-fridge/microwave combos, and a communal laundry facility. Maximum total of 8 occupants in a one-bathroom suite: 5 persons in beds and up to 3 persons on the floor. There must be a Responsible Party at least 25 years old in each suite.



Spence Residence Hall Suite*

2 bedrooms + 1 bathroom for \$200/week

Includes 2 private bedrooms, shared bathroom, four (4) extra-long twin beds per suite, two (2) mini-fridge/microwave combos, and a communal laundry facility. Maximum total of 7 occupants in a one-bathroom suite: 4 persons in beds and up to 3 persons on the floor. There must be a Responsible Party at least 25 years old in each suite.



***Accessible suites available upon request in the Spence Residence Hall.**

If you require ADA compliant housing, please contact info@stoausa.org.

Questions? Contact Stoa's administrator at nitoc@stoausa.org.